

Providing Best Work

Opportunities to the People



Amir Aviation Limited

Govt. approved recruiting

Licence No. RL- 840



158, Naya Paltan, 1st Floor, D.I.T. Extn Road,
Dhaka-1000



+8801819525558



amiraviation.bd@gmail.com



www.rubelgroup.com.bd



CORPORATE OFFICE

158, Naya Paltan, 1st Floor,
D.I.T Extn Road, Dhaka-1000

Call : +8801819525558

Email : amiraviation.bd@gmail.com

web: rubelgroup.com.bd

UAE OFFICE

P.O Box No. 121 308, UBL Bank Building,
Bank Street, Bur Dubai, UAE

Phone: +971 4456 5151

Mob: +971 50 4282 188, +971 55 4383 166

E-mail: uae@rubelgroup.com

QATAR OFFICE

P.O Box No. 24584, CR No. 68355,
Doha, Qatar.

Phone: +974 4441 0917

Mobile: +974 77311511

Fax: +974 4441 0917

E-mail: qatar@rubelgroup.com

SAUDI ARABIA OFFICE

Batha commercial Centre 1st
Floor B-287

P.O Box No. 26267, Riyadh 11371,
Kingdom of Saudi Arabia.

Mobile: +9665364814114,

+966530022260

E-mail: grameentnt2016@gmail.com



Welcome to

Amir Aviation Limited

“

**Where Jobseekers &
Employers Converge**

”





Rubel Group

An Overview

- Rubel Group
- Amir Aviation Ltd.
- Nahar International Overseas Ltd.
- Hudud Al.afkar Recruiting office.
- Ausaf Al-Ekhtyar Consultant.
- Manpower export service
- Foreign worker service
- Times visit
- H. K international

In SUM, Rubel Group is poised for Changing lives to betterment worldwide.





CONTENTS

Message from the Chairman	06
Message from the Managing Director	07
Overview	08
Opportunities	09
Glimpses of Bangladesh	10
Glimpses of Bangladesh	11
Strategies	12
Values	13
Company Profile	14
Management Hierarchy	15
Services	16
Why choose Rubel Group	17
Recruitment Procedure	18
Employer's Responsibility	23
Brands	24
License	26



Message From The Managing Director

Keeping the main focus on business expansion and growth in the group is continuously taking up projects to make it the largest conglomerate in the business arena of Bangladesh. Be dependent on the firm foundation and highly professional human resources, the group is still making good use of its business possibilities and also contributing to the improvement of the local corporate culture and making a significant contribution to the overall progress of the country and its economy.

However, despite fascinating growth and business expansion, the company's aims and objectives are to serve people with maximum satisfaction and continue the strive for the greater happiness of the people and the country.

A handwritten signature in black ink, appearing to read 'Muhammed Mojibul Haque Rubel'. The signature is fluid and cursive, with a prominent flourish at the end.

Muhammed Mojibul Haque Rubel
Managing Director
Amir Aviation Limited



OVERVIEW



HK International is one of the leading Government approved Manpower Agencies with License No. RL-998, in Bangladesh registered under the Ministry of Expatriates Welfare & Overseas Employment which facilitates professionally managed outflow of workforce from Bangladesh to abroad. Amir Aviation Ltd. is sister concern of Rubel Group, a foremost conglomerate of Bangladesh.

HK International is a member of Bangladesh Association of International Recruiting Agencies (BAIRA).

In spite of numerous recruitment agencies in Bangladesh, HK International realized that there was a need for a professionally managed recruitment agency to bridge the gap between opportunities and the opportunity seekers and thus the company came into existence. The company's overall stance has been to go-all-out for excellence and thus become the principal source of competitive, efficient and reliable Human resource solutions provider. The esteem position, in which HK International is held today, bears the testimony to the measure of success that the company has been able to achieve over the years.

For HK International, social responsibility extends well beyond just writing a donation check to a charitable cause. It's about strengthening the diversity of our communities and creating opportunities for all people to participate in the workforce. It's about focusing on the long-term view and developing solutions that are sustainable. Whether it's helping an unemployed youth to join the workforce, or finding an engineer a job abroad, our reward comes from knowing that we make a real difference.

Today and in the future. Because of our relationships with both employers and individuals, we are uniquely positioned to determine where current and future skills gaps are, identify people who need help engaging with the workforce, and develop solutions that bring these two groups together, mutually benefiting both. In this way, we function as a "bridge" to employment for many who would otherwise be unemployed.

HK International has always considered human resources to be the only appreciating asset to our country. Since it is obligated to source quality human resources to its valued partners, HK International has developed its own training center where candidates are well groomed and trained for foreign companies.

Our systems, programs and policies are designed to make the connection to work a viable option for those who need it. Our industry leading skills assessment processes and hiring policies help us ensure that people are not discriminated against. Rather, we focus on people's abilities - not their disabilities.



Connecting People with Possibilities

Bangladesh may not be blessed with natural resources but is a home of enormous manpower which has a potential to catapult Bangladesh into the leading manpower exporting countries of the world. So far Bangladesh has been known for its semi-skilled and unskilled workforce being sent to work abroad. But gradually we are exporting increasing number of Engineers, Doctors, IT specialists, Financial and Accounting Managers each year. This change of talent migration will soon put Bangladesh into world's leading talent hub. As there has been an economic and development renaissance in Asia, a huge demand of workforce has been called upon by the countries involved in this phenomenon. Hence, to meet their demand a potential to use the underutilized labor force of Bangladesh has caught our attention. HK International has been in the business of tapping human resource from Bangladesh and placing them in these countries for the last 10 years. Using the acquired experience, HK International plants to satisfy the demand of these requirements as well as contribute to the economic growth of the country by reducing unemployment and increasing the foreign exchange of the country.

As mentioned, HK International has been in this business for the last 8 years, it has acquired the technical know-how of the business and over the years it has made the necessary modifications in the process of identifying potential jobs and placing the required human resource. HK International, as it was, will always be open to necessary changes to smoothen the recruitment process, to make the formalities easy for both the employees and employers.

GLIMPSES OF BANGLADESH



GLIMPSES OF BANGLADESH

- Second Largest Muslim country in the world in terms of population.
- Largest Delta in the world is also the Seventh Largest reservoir of Human Resources in the world.
- Bangladesh is the second largest UN peace troop contributor.
- Bangladeshi Engineers are working with Intel, Microsoft, Facebook etc.

Geography

Location: Southern Asia, bordering the Bay of Bengal, between Myanmar and India
90° East Longitude
24° North Longitude

Area 2,47,570 Square Kilometers

Population 160.3 Million; Muslim 90%, Hindu 9%, Buddhist 0.6%, Christian 0.3% & Others 0.1%

Capital City Dhaka

Airport 8 (Dhaka, Chittagong, Jessore, Rajshahi, Sylhet, Barisal, Cox's Bazar, Syedpur)

Sea Ports Chittagong and Mongla

Climate

Winter Temperature Max 28.89° c & Min 6.89° c

Summer Temperature Max 38.55° c &

Min 18.89° c Average Rainfall
90° in Monsoon

| Government

Head of The State President

Head of The Govt. Prime Minister

| Economy

Heavy Industries

Jute, Textile, Sugar, Paper, Fertilizers, Steel, Chemicals, Pharmaceutical, Toiletries, Cement, Ship Building, Ceramics, Garments, Leather, Fishing etc.

Small Industries

Glass, Soap, Plastic, Hosiery, Food Processing etc.

Cottage Industries Cotton & Silk Fabrics, Copper & Aluminum, Jewelry, Handicrafts etc.

Cottage Industries

Cotton & Silk Fabrics, Copper & Aluminum, Jewelry, Handicrafts etc. Chief Crops Rice, Jute, Sugar cane, Tea, Tobacco. Vegetable, Potato etc.

Minerals

Coal, Oil, Natural Gas, Limestone, Silicon Sand.

Others

Rubber, Timber

Currency

Taka (US\$1 = Tk. 84.96 Variable) Per

Capital Income

US \$ 3167 (2014)

Exports

Readymade Garments, Manpower, Textile, Jute, Shrimps, Tea, Fish, Vegetables, Medicines, Handicrafts Etc.

Imports

Medical Equipment, Machinery and Transport Equipment, Petroleum and Edible Oil, Industries, Raw Materials etc.



STRATEGIES

Revenue

Generating more revenue requires us to develop strategic insights about our clients' needs and goals, elevating and broadening our mutually-beneficial relationships and measuring our contribution to our clients' businesses.

Efficiency

Improving our efficiency means achieving speed, quality and effective use of resources throughout all our operations.

Innovation

Demonstrating our commitment to innovation requires us to continuously capture creativity in local markets and replicate this around the world especially in Middle East countries. Our role is to develop and expand our capabilities, while creating services targeted to what's new and what's next in the world of work.

Thought Leadership

Maintaining our thought leadership means continuously anticipating future dynamics of the market and contributing to the design of social and employment systems on a global basis.

Organization and Culture

Evolving our organization and culture requires attracting and retaining high quality people for the long term.

It also requires creating an environment that promotes entrepreneurship, rewards high performance and motivates us to reach our full potential.

VALUE



PEOPLE

We care about people and the role of work in their lives. We respect people as individuals, trusting them, supporting them, enabling them to achieve their aims in work and in life.

KNOWLEDGE

We share our knowledge, our expertise and our resources, so that everyone understands what is important now and what's happening next in the world of work – and knows how best to respond.

We actively listen and act upon this information to improve our relationships, solutions and services.

Based on our understanding of the world of work, we actively pursue the development and adoption of the best practices worldwide.

INNOVATION

We lead in the world of work. We dare to innovate, to pioneer and to evolve.

We never accept the status quo. We constantly challenge the norm to find new and better ways of doing things.

We thrive on our entrepreneurial spirit and speed of response; taking risks, knowing that we will not always succeed, but never exposing our clients to risk.



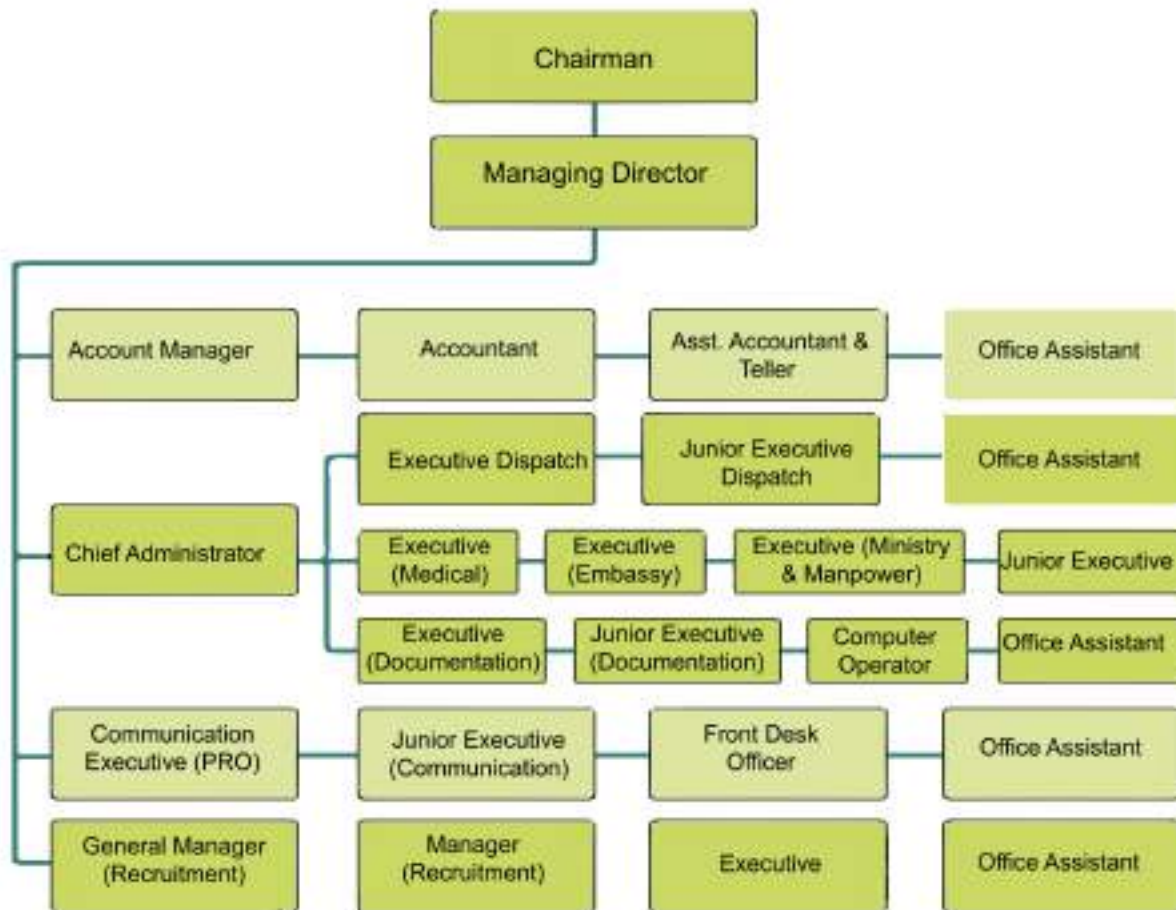
COMPANY PROFILE

HK International is a country leader in the employment services industry; discovering and delivering services that enable its clients to win in the changing world of work. Founded in 1998, the company offers employers a range of services for the entire employment and business cycle including permanent, temporary and contractual recruitment; employee assessment and selection; trading; and consulting. Rubel Group's network of 4 offices (1 in KSA, 1 in Dubai, 1 in Qatar, 1 in India.) in 5 countries and more than 300 scouts spread across the country enables the company to meet the needs of its around 200 clients, including small and medium size enterprises in all industry sectors, as well as the world's largest multinational corporations. The focus of Rubel Group's work is on linking job opportunities through supplying quality & efficient employees, enabling clients to concentrate on their core business activities. HK International operates hand in hand with five brands:

- Rubel Group
- Amir Aviation Ltd.
- Nahar International Overseas Ltd.
- Hudud Al.afkar Recruiting office.
- Ausaf Al-Ekhtyar Consultant.
- Manpower export service
- Foreign worker service
- Times visit
- **H. K international**

Name of the Company	HK International
Status Company	(Private)
Name of the Chairman	Md. Abdul Wadud
Name of the Managing Director	Muhammed Mojibul Haque Rubel
Nature of Business	Manpower Placement
Year of Establishment	2014
License No.	RL- 840
Office Location	66/A, Shama Complex, 6th Floor, Naya Paltan, Dhaka-1000, Bangladesh
Mobile	+880 1791232575
Web site	www.rubelgroup.com.bd
E-mail	info.rubelbangladesh@gmail.com
Banker	National Credit and Commerce Bank Ltd (NCC) Islami Bank Bangladesh Limited (IBBL)
Insurance	Populer Life Insurance Co.
Membership	Member of Dhaka Chamber of Commerce and Industry

MANAGEMENT HIERARCHY





(A) MANPOWER CONSULTANCY / ADVISORY

HK International, we leverage our unparalleled expertise of professional recruitment principles, along with a deep understanding of local & international manpower recruitment processes, to provide comprehensive HR services & recruitment solutions that maximize our clients' manpower potential. These services revolve around Rubel Group's proven global competencies.

We possess excellent database to provide international placements in all major spheres of employment. We have experienced staff members with extensive working knowledge of the international industries. We mainly place job seekers in Kingdom of Saudi Arabia, United Arab Emirates, Qatar, Malaysia and Singapore.

The hunt for quality talent can require overseas recruitment of particular skills. In many instances where the ideal candidate has been sourced, a Work Permit is required. With over one hundred and forty million people, it should come as no surprise that Bangladesh is one of the world's biggest talent hubs.

HK International works in tandem with several international recruitment consultancies, assisting with overseas immigration and international work permit legislation advice. Indeed, providing an immigration advice is often a service that we offer as part of their recruitment package to prospective and current clients.



SERVICES

(B) EMPLOYMENT ASSISTANCE

We always prefer selection of applicant either by oral or practical test to be conducted by the employer or his authorized representative. We arrange their accommodation, transport and all other logistic support required for the purpose. In case we are entrusted with the selection & testing of worker, we normally do it with the help of a team of experts for technical & professional categories under direct supervision of our professional executives.

(C) VISA ASSISTANCE

Following are the types of visas that we provide services to:

- 1) Employment Visa
- 2) Visit Visa
- 3) Work Permits

We specialize in fast, dependable and prompt visa services. The experience gained by processing thousands of travel documents guarantees to have your visa handled quickly, accurately and professionally.

(D) TICKET ASSISTANCE

We take the responsibility of providing the tickets for the recruits through our own travel agency Grameen Travel & Tourism, which is duly licensed and approved by the Government to facilitate all the required ticketing.



WHY CHOOSE AMIR AVIATION LTD.

Today's rapidly changing business climate, the efficient and effective organization wins – and that means having people who fit your needs perfectly, when you need them. Whether you need to staff a single facility or support a multi-location and multinational personnel operation with uniquely skilled, semi-skilled or low skilled people – Rubel Group has recruitment and staffing services to help you meet your goals.

ADVANTAGES OVER OTHER STAFFING SERVICES

Specialized Divisions & Subsidiaries

Specialized recruiters in each of our industry specific division & subsidiaries know the unique skills and requirements of each industry and where to locate the best people in that field.

QUICK RESPONSE TIME

Since we are constantly recruiting people, we have an effective database of qualified candidates ready to go to work. Right after selection, we post all the details of candidates in our online project management application so that our clients remain constantly updated regarding the progress in terms of medical fitness, flight and deployment schedules etc.





RECRUITMENT PROCEDURE

To begin with, the employer and the HK International should execute an agency agreement between them stating adequately the terms and conditions regarding the demand and supply of manpower from Bangladesh. This agreement should be signed by both the parties towards acceptance of stated terms and conditions upon which the demand will be executed.

Understanding You Needs

We study the client requirement and discuss the details with their representative to obtain a complete understanding of the needs. We work closely with our client, to clearly understand what their actual requirement is, so that we can grow our business relationship further. Then we ask the clients to submit necessary documents discussed below under the heading

Employer's Part

Power of Attorney

The employer / principal will issue a power of attorney to the HK International as a true & lawful attorney and agent in Bangladesh in respect of handling all the affairs with Bangladesh Government in respect of recruitment on behalf of the employer / principal.

Demand Letter

The employer / principal will formally issue a demand letter in favor of HK International stating the job categories, number of workers required in each category, monthly salary, duty hours, duration of contract and other amenities for workers such as food, medical, transport, air passage, accommodation and other benefits.

Visa Documents

Please note that, this particular requirement of document is only applicable for Kingdom of Saudi Arabia. The employer / principal will provide visa documents (Okala) by which the Government of the employing country allows the employer/principal to recruit such workers from Bangladesh. It shall be in original and authenticated, which will be accepted by the respective embassy.



RECRUITMENT PROCEDURE



(A) Company Registration (CR) Copy

Please note that, this particular requirement of document is only applicable for Kingdom of Saudi Arabia. A photocopy of the company registration is required.

(B) Consular Letter

Again please note that, this particular requirement of document is only applicable for Kingdom of Saudi Arabia. A letter addressing the Consular General of the recruiting country to allow recruitment of candidates from Bangladesh as per demand letter against the stated visa block number.

(C) Employment Agreement

Copies of standard employment contract between employer and employee are required.



(D) Agency Agreement

The employer and HK international should sign an agency agreement with all the terms and conditions which will be the guide for both the parties. Authorization Letter, P/A and Demand Letter should be in original, duly sealed & signed by the sponsor or authorized person & attested by Chamber of Commerce and Ministry of Foreign Affairs. Upon receipt of all necessary documents mentioned above, HK international. will be able to deploy the recruited persons to the destination of the employer within 14-45 days' time subject to availability of seats in airlines concerned

HK International

The pre-selection Process

The pre-selection process involves advertisements in local mass media in order to inform potential applicants about the jobs or contract at hand. In many cases, HK international tends to draw on its preexisting pool of applicants and potentials either from returning contracts abroad or those in a waiting list for a new job. Plus, HK international. has an extensive computer database of all present & probable future applicants who come from all walks of life with different skills and qualities. The whole pre-selection process is run by our own recruiting manager and executives based on following criteria:

- a) Capability**
- b) Competency**
- c) Knowledge**
- d) Experience**
- e) Finishing of job and quality of job performed.**

Selection & Deployment Process



RECRUITMENT PROCEDURE

(a) Final Selection

We always prefer selection of applicant either by oral or practical test to be conducted by the employer or his/her authorized representative. We arrange his/her/their accommodation, transport and all other logistic support required for the purpose. In case we are entrusted with the selection & testing of worker, we normally do it with the help of a team of experts for technical & professional categories under direct supervision of our professional executives in our state of the art Trade Test Center. Testing facilities for complex engineering functions are also available at our Training Centre premises in Amulia, Dhaka, in adherence to the most modern processes and techniques in use at the time.

HK International prides itself in the quality of the workforce it supplies and in order to retain the high levels we maintain that our trade testing process is constantly modified and adapted with the needs and requirements of various professional fields.

(b) Web Based workers Management System

Here in HK International, We maintain a custom built web based project Management application software in which our partners (Employers, stakeholders of the project etc.) can observe the progress of the processing work of each individual as it happens. We constantly are updating the file of each worker on our management application system. Once a project is inked, we provide the employer with an user id and password to access the system.

(c) Documentation

HK International also assumes the responsibility of accumulating the necessary documents of the applicants or candidates. Documents such as passport copy, visa copy, Bio-data, photo-graph, health certificate, academic qualification certificates, employment contract, and other necessary documents are collected for proper representation to the clients. Each worker is deployed with his/her own personal file which usually has the above documents. HK International also acquires necessary permissions from relevant government agencies and legal institutions.



RECRUITMENT PROCEDURE

(d) Validation of Proper Documentation

Unlike other recruiting agencies, we just don't merely collect documents and assemble those in workers' personal file rather we make every effort to check the authenticity of those documents on our behalf. For an instance we check the authenticity of educational papers with education boards and verify police records to make sure the worker deployed from our agency has clean records.

(e) Medical Checkup

After a candidate has passed the first stage of selection the worker/candidate is sent for medical checkup in modern and authorized medical center of the respective embassies of the country of employment. These medical facilities maintain strict adherence to international standards. HK International looks into the matter strictly that every personnel positioned in the client's corporation and organization is in sound physical and mental state. For Kingdom of Saudi Arabia, prospective workers are required to undergo medical check-up at GAMCA approved medical centers as required by law.

Our workers usually undergo following check-ups:

- Routine Urine Test
- HBsAg, TPHA, HIV, Anti-HCV
- RBS, S Bilirubin, SGPT, SGOT, Creatine, Cholesterol
- Widal Test
- X-Ray, TB

(f) Application and Receipt of Visa

On behalf of the selected candidates, Amir Aviation Ltd. applies for the visa in the respective embassy as authorized by the employer. For countries like UAE, Qatar, Oman-we send complete set of documents so that our clients can submit those for visa at their respective ministries of that particular countries for processing.



RECRUITMENT PROCEDURE

Upon receipt of visa HK International:

- Will match the employment contract with the final contract clause to protect the rights of the employees.
- Will Prepare all documentations as per need
- Will Process medical clearance from Medical Center
- Will collect his/her police clearance certificates.

(g) Orientation

Once visa confirmation arrived either from the embassy or from the employer, we send all our prospective workers to undergo a rigorous orientation process. This is a new segment which has been introduced to enhance the workers' knowledge about his/her career.

This process usually takes 10-15 days in which we educate them about the below mentioned criteria:

- Educating themselves with the business entity they are about to serve
- Knowing the labor laws and other conditions related to the contract
- Do & Don't for them during the employment contract
- Detail knowledge about the destination country's laws

- Knowing his / her rights and obligations
- Lear operational language to sustain. Example: We teach them basic and sustainable language if so required. If the workers are to work for a Chinese management company and it is required that they know Chinese – we will try to educate them with sustainable level of language and also give emphasis on learning the language even before being selected on our pre-selection interviews.

- Soft skill set development. We strongly believe that an employee should be articulate enough to be presentable at work premises. We work with them about the necessary soft skills development before their deployment.

(f) Ticketing and Immigration

The employer may send PTA or remit necessary traveling expenses in favor of Grameen Travel & tourism to facilitate traveling as scheduled. We obtain emigration clearance from the concerned government department for the candidates.



RECRUITMENT PROCEDURE

(I) Departure

In tandem with orientation, our own IATA approved travel agency is then directed to reserve seats for the reported workers. Employers are required to send the flight confirmation & PTA in favor of us to facilitate the selected workers.

Flight Schedule:

Flight details in an advance at least 24 hrs, will be furnished to the (clients) employer in order to enable to arrange necessary pick up for the traveling workers.

Deployment Schedule:

Upon deployment, we instantly confirm our clients via e-mail / fax by sending deployment message so that they may pick up the workers in due time.

(j) Follow up

Our work does not end after deployment of the workers. We make sure our workers are received by the company representative at the airport on time. We follow up with our client that our workers are employed and match their requirements. Should there be any crisis situation regarding job cuts, shedding of employees, we negotiate with both employer and employees to reach a common platform where both parties can win.

Repatriating:

If the recruited workers are proved to be unfit due to lack of medical fitness or due to lack of skills at their respective trades, we usually replace the worker at our cost or we act in accordance with agreement made between concerned parties.



RECRUITMENT PROCEDURE

- Arrange timely receipt of the workers at airport
- Inform HK International about receipt of the workers.
- Advance payment of an amount to each worker on arrival in the country of work (deductible from monthly salary).
- Arrange furnished housing accommodation suitable to human living.
- Ensure water and electricity in the living place.
- Ensure full security of the workers in the living and working places, especially in cases of female workers.
- Timely payment of salary for every working month.
- Keeping updated the validity of the passport, residence permit/employment visa of the workers.
- Treating workers as human being.
- Proper medical treatment of the workers in case of any sickness/accident.
- Inform HK International any problem that requires handling from our end.
- Follow terms of agreement signed between the employer and the workers.





HK International brand has been at the forefront of the employment services industry for decades. In the past, our reputation was built on the timely provision of skilled workers who were meticulously matched to client requirements. Today, we do that and much, much more. Due to our unparalleled expertise, quality and service offering, we can help clients solve problems or take advantage of new opportunities in the world of work.

Questions? The Rubel group of companies can help find the answers.

HK International

[Find The Opportunity For You](#)

HK International (www.rubelgroup.com.bd), a division of Rubel Group., offers comprehensive, expert recruitment services backed by award winning training, assessment and selection and deployment. Our extensive resources, world-class client list, and reputation attract a diverse group of talented candidates, with every level of education, skills and experience ranging from permanent direct hire to contractual employment.

Mission Hospital Pvt. Ltd.

[Ensuring a better healthcare](#)

A new addition to the growing family of Rubel Bangladesh with the aim to provide medical checkup facilities to the migrating employees. The Centre is well equipped with all modern equipments necessary for smooth operation. It is run by well-known professionals in Medicine and Pathology.

Grameen Travel & Tourism

[Leading Advocate of Travel World](#)

Grameen Travel & Tourism (www.grameentnt.com) created mainly as a backward linkage to serve Rubel Bangladesh demand for booking and ticketing is now serving other clients and customers alike. To thrive in the industry Grameen Travel & Tourism has struck deals with Biman Bangladesh Airlines as authorized agent and is the major partner of Air Emirates, Qatar Airways, Air Etihad, Saudi Airlines, Gulf Airways and Air India.



BRANDS

Rubel Group Facilities Management

Welcome To Rubel Group Facilities Management. Explore business opportunities through strategic business units of the Group and flourish and prosper in the concerned sectors by harnessing the people's power and potentials as well as making best use of resources giving due importance to national priorities. Making meaningful contribution in the solo economic development of the country through responsible business practice and to put the country and the nation first in all business endeavors. With this basic premise the Group and all its SBUs must Endeavour to integrate the business interest of the Group with the national interest and

Overall socio economic development of the country in a way that both are complementary to each other.

Rubel Builders Limited

Rubel Builders Ltd. (RBL) was incorporated in 2009 as a strategy to diversify the business portfolio of the Rubel Group. An ISO 9001:2008 certified company this new undertaking signifies the long term vision of the Group to make a niche in the growing real estate sector of the country. The primary aim has been to take part in residential and commercial building constructions for meeting growing demand in this sector.

২৪৬৯ 2 2459

Licence Number : RL- 840

Name of the Agency : AMIR AVIATION
LIMITED

Business Address : 158 NAYA PALTAN
(1ST FLOOR)
D.I.T EXTN. ROAD
DHAKA-1000

Name of the Proprietor / MUHAMMED MOJIBUL
HAGUE RUBEL

Managing Partner / VILL- RAJAPUR
PO- RAJAPUR BAZAR

✓ Managing Director PS-DAGONBHUIYAN
with Permanent Address : DIST- FENI

২৪৬৯ 3
RL- 840

Specimen Signature



Section 9 of the Overseas

Employment & Migrant Act-2013

This licence is issued under Section 10 of the
Emigration Ordinance, 1982 to carry on the business
of a recruiting agency. The licence is not
transferable nor it shall be used directly or indirectly
by any person other than the person in whose favour
it is issued.

The Government reserves the right to cancel or
to suspend the licence at any time without assigning
any reason.

Director General 25.4.12
Bureau of Manpower, Employment
and Training
Government of the People's
Republic of Bangladesh.

Dated, Dhaka
The 25TH day of APR 2017

২৪৬৯ 6 2459

RL- 840 RENEWAL

31 DEC 2025

Licence Renewed up to.....

Mohammed Mizanur Rahman Bhuiyan
Deputy Secretary
Director (Employment)
Bureau of Manpower, Employment & Training, Dhaka.

২৪৬৯ 7 2459

RL- 840 RENEWAL

ঢাকা দক্ষিণ সিটি কর্পোরেশন

www.dsccl.gov.bd



সাইনেস ইস্যুর বিবরণ

ই-ট্রেড লাইসেন্স

ইস্যুর তারিখ : 24/07/2022
ইস্যুর সময় : 14:58:11

সাইনেস নং : TRAD/DSCC/256025/2019

স্থানীয় সরকার (সিটি কর্পোরেশন) আইন, ২০০৯ (২০০৯ সনের ৩০ নং আইন) এর ধারা ৯৪-তে প্রদত্ত ক্ষমতাবলে সরকার প্রণীত আদর্শ কর চুক্তিসমূহ, ২০১৯ এর ১০ অনুচ্ছেদ অনুযায়ী ব্যবসা, বৃষ্টি, পেপা বা পিন্ন প্রতিষ্ঠানের উপর আরোপিত কর আদায়ের লক্ষ্যে নিম্নে বর্ণিত ব্যক্তি/প্রতিষ্ঠানের অনুকূলে অত্র ট্রেড লাইসেন্সটি ইস্যু করা হলো।

১। ব্যবসা প্রতিষ্ঠানের নাম	:	শ্রীমীর এভিয়েশন পিপিটিভ		
২। প্রতিষ্ঠানের মালিকের নাম	:	মুহাম্মদ মজিবুল হক রুবেল		
৩। পিতা / স্বামীর নাম	:	সামসুল হক		
৪। মাতার নাম	:	সমতাজ বেগম		
৫। ব্যবসার প্রকৃতি	:	পিপিটিভ কোম্পানী		
৬। ব্যবসার ধরণ	:	রিজিটার্ড এজেন্সী		
৭। প্রতিষ্ঠানের ঠিকানা	:	৩৭/১ নং পল্টন রায়নগ টাউন, মঙ্গল পল্টন ৯ম তলা, ডি আই সি রোড পল্টন ঢাকা ১০০০		
৮। অঞ্চল / বাছার লক্ষ্য এলাকা	:	২	ওয়ার্ড / সার্কেট: ১৯	
	:	-		
৯। এনআইডি/পাসপোর্ট/জন্ম নিবন্ধন নং	:	২৯৯৫৪০৪৯৯৭৯১৪	বিআইএন নং:	
ফোন	:	০১৭১১৭১১২৫০৪	ই-মেইল:	
১০। অর্থ বছর	:	২০২১-২০২২ (নেবারিনকৃত)	ব্যবসা শুরু তারিখ:	
১১। মালিকের বর্তমান ঠিকানা			মালিকের স্থায়ী ঠিকানা	
হোল্ডিং নং	:	৪৫৯/২	হোল্ডিং নং	:
রোড নং	:		রোড নং	:
গ্রাম / মহল্লা	:	উত্তর শাহজাহান পুর	গ্রাম / মহল্লা	:
পোস্টকোড	:		পোস্টকোড	:
থানা	:	শাহজাহানপুর	থানা	:
জেলা	:		জেলা	:
বিভাগ	:	ঢাকা	বিভাগ	:
১২। ট্রেড লাইসেন্স/নেবারন কি (বার্ষিক)				
লাইসেন্স/নেবারন কি	:	৩৫০০	সাইনবোর্ড কর	:
সারচার্জ	:	০	ছাটি	:
আয়কর / উৎসেধক	:	৩০০০	ফর্ম কি	:
হকিয়া ()	:	০		:
সংশোধনী কি	:	০.০০	সর্বমোট	:
				৮২৭১.০০

অত্র ট্রেড লাইসেন্স এর মেয়াদ ০০ শে জুন, ২০২৩ পর্যন্ত

Dussein



[Signature]

লাইসেন্স ও নিয়ন্ত্রণ সুপারভাইজার

কর কর্মকর্তা



66/A, Shama Complex, 6th Floor, Naya
Paltan, Dhaka-1000

Call : +880 1791232575

Email : hk2dhaka@gmail.com

web: www.rubelgroup.com.bd